

Medieval Literature

ENG 34001



Therefore I, William Caxton, a simple personne, have endeavored me to write first over all the said Book of Polycronicon, and somewhat have changed the rude and old Englishe that is to write. Certain words which in these days be not understood.

of them that comen speken greet benygny
all that his lande fulfilld of freyne
the queene. With his wylle comendeth
himselfe to the kyng, and prayeth
that he shal be able to doo
the kynges service as he shal
be able to doo.

Medieval Literature

Course Syllabus Course Plan (Spring 2026) Online Conference Appointments Using Google Drive & Chat Stress Release

Dr. Robinson's Cyberspace

∞ COURSE HANDBOOK ∞

Where do I find everything?

Items Located in the Course Site in **Canvas**:

- The “Start Here” Module
- Your Course Grades

Items Located at the Course Home Page

<https://cyberspacerobinson.org/ENG34001/>

The course materials are password protected.

The password is located in the Start Here module in Canvas.

- The Course Plan
- The Course Syllabus
- All the Course Lessons—except for the last one!
- All Assignments—except for the Discussion Board!

Items Located at the Shared Course Space

<https://unicorn-castle.org/earlybritlit/>

The course materials are password protected

The password is the same one you use for the Course Home Page.

- The Last Course Lesson: The Lenses We Look Through (Medievalism)
- The Discussion Board: we are sharing this space with Dr. Carol Jamison’s class (Georgia Southern University).

Need help?

- **Email me:** clrobins@kent.edu
- **Or meet with me (online):**
 - [Sign up for an appointment](#)
 - Meet me in KSU Google Chat (Find this in your Flashline account.)



[Week 1](#)	[Week 2](#)	[Week 3](#)	[Week 4](#)	[Week 5](#)	
[Week 6](#)	[Week 7](#)	[Week 8](#)	[Week 9](#)	[Week 10](#)	
[Week 11](#)	[Week 12](#)	[Week 13](#)	[Week 14](#)	[Week 15](#)	[Week 16](#)



Notice that there is a direct link to each week's requirements. This is located at the top of the Course Plan.

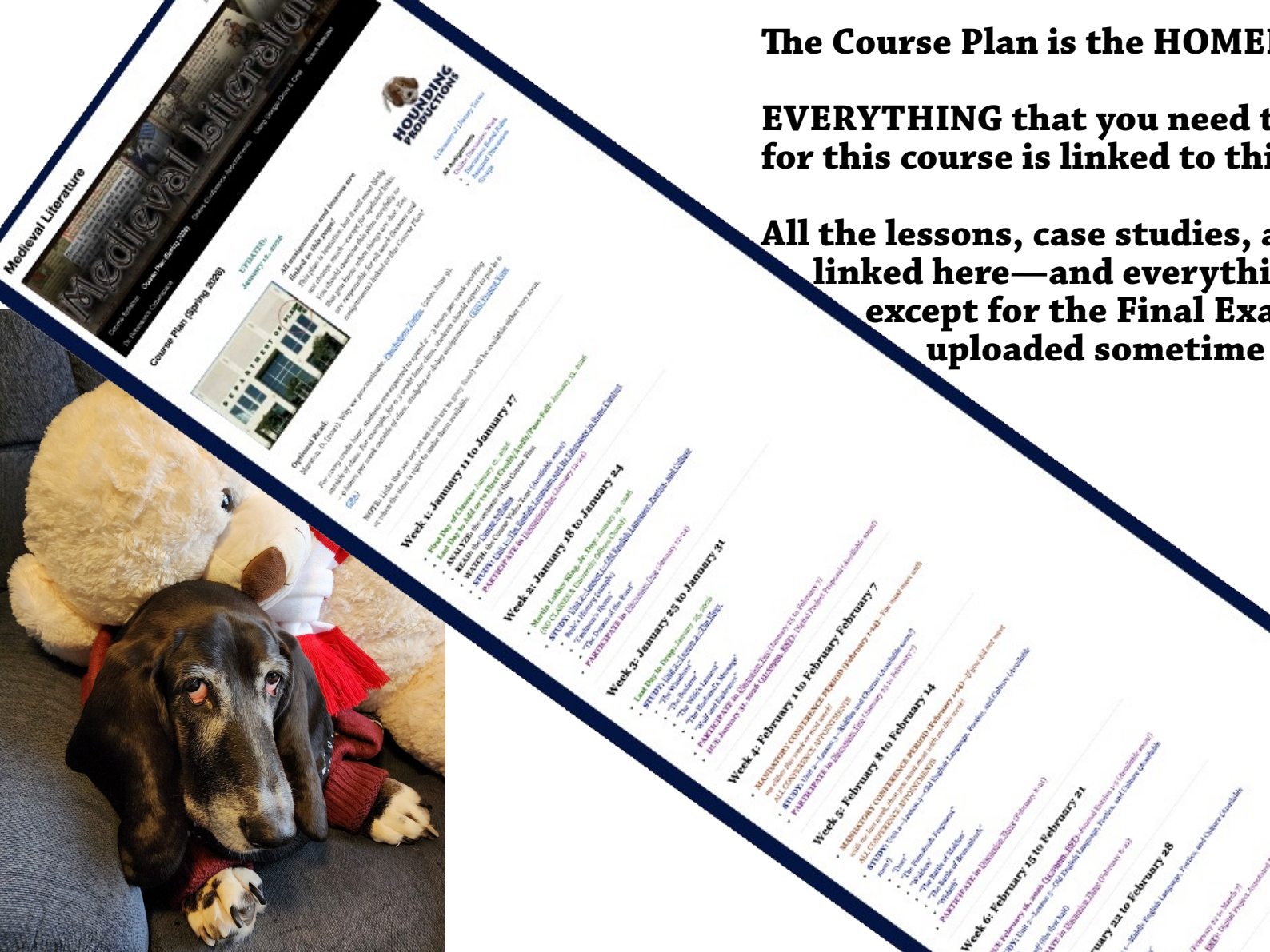
All assignments and lessons are linked to this page! This plan is tentative, but it will most likely not change much—except for updated links. You should examine this plan carefully so that you know when things are due. You are responsible for all work (lessons and assignments) linked to this Course Plan!

Optional Read:

Marston, D. (2021). Why we procrastinate. [Psychology Today](#). (2021 June 9).



For every credit hour, students are expected to spend 2 – 3 hours per week working outside of class. For example, for a 3 credit hour class, students should expect to put in 6 – 9 hours per week outside of class, studying or doing assignments. ([KSU Protect Your GPA](#))



The Course Plan is the HOMEPAGE.

EVERYTHING that you need to complete your work for this course is linked to this homepage.

All the lessons, case studies, and assignments are linked here—and everything has been uploaded, except for the Final Exam (which will be uploaded sometime in April).



Week 1: January 11 to January 17

Here is an image from the Course Plan. These two weeks are typical of your work for the semester, with one exception.

NOTE: I am still posting lessons. They should all become available by January 25; however, clearly, **you may begin with the first two weeks' lessons and assignments.**

In addition to going through the lessons, you are keeping a journal. **The first set of journal entries is due February 16, 2026 (11:59pm)!**

Each week, you are participating in an online discussion with some of your fellow classmates, as well as with students from Dr. Carol Jamison's class (Georgia Southern University). Discussion One should feel easy, friendly. Later discussions will focus on particular reading assignments and/or your work on your Digital Project.

Your Digital Project Proposal is due January 31, 2026 (11:59pm)! Information for this assignment will be available by the end of the day, January 14 (if not sooner).

- **First Day of Classes:** January 12, 2026
- **Last Day to Add or to Elect Credit/Audit/Pass-Fail:** January 13, 2026
- **ANALYZE:** the contents of this Course Plan
- **READ:** the [Course Syllabus](#)
- **WATCH:** the [Course Handbook](#)
- **STUDY:** [Unit 1—The English Language and Its Literature in Some Context](#)
- **BEGIN to work on** Journal Entries 1-5 (DUE February 16, 2026—*Available soon!*)
- **PARTICIPATE in** [Discussion One](#) (January 12-24)

[Return to Top](#)

Week 2: January 18 to January 24

- **Martin Luther King, Jr. Day:** January 19, 2026
(NO CLASSES & University Offices Closed)
- **STUDY:** [Unit 2—Lesson 1—Old English Language, Poetics, and Culture](#)
 - *Bede's History* (sample)
 - "Cædmon's Hymn"
 - "The Dream of the Rood"
- **PARTICIPATE in** [Discussion One](#) (January 12-24)

[Return to Top](#)

Early British Literature & Medieval Literature

Dr. Carol Jamison & Dr. Carol Robinson



This is the second site that our class will be sharing with Dr. Carol Jamison’s Early British Literature class (Georgia Southern University). The site is being hosted by The UNICORN Castle.

Welcome!

Early British Literature

Dr. Carol Jamison

(Georgia Southern University)



BeoWoofie

Medieval Literature

Dr. Carol Robinson

(Kent State University)



Betty Zing

The UNICORN Castle



Last Lesson of the Semester

- The Lenses We Look Through (Medievalism)
 - Medievalism in the Arts and Crafts
 - Adaptation, Adoption, and Appropriation of the Medieval
 - The European Medieval World & Medievalism

Puppy Therapy

- [Watch Betty Grow!](#)
- [Pup Plows Down Snowy Steps || ViralHog](#)
- [Betty Zing Visits KSU Trumbull](#)



Dr. Carol Jamison
(Georgia Southern University)

Dr. Carol Robinson
(Kent State University)

A Little Background:

We slightly knew each other when we were both earning our Ph.D.s from the **University of Georgia**, back in the early 1990s. We started working together after reconnecting through the **International Society for the Study of Medievalism**.



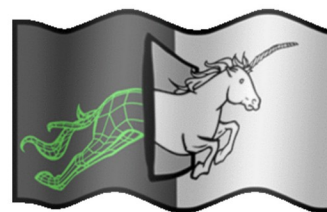
The UNICORN Castle is hosting its first (hopefully annual) Student Congress on Medievalism. You will be earning credit for participating in that!

UNICORN Castle Student Congress on Medievalism

May 3-9, 2026

This conference aims to foster thoughtful student discussion about how medieval texts and ideologies are adapted and mobilized in post-medieval periods and contemporary culture.

Call for Presentations



The UNICORN Castle Task Force



Advice for Doing Well in this Class

- Look at the Course plan at the start of each week.
- Submit your assignments on time —don't wait until the last minute to complete them.
- Email me (or sign up for an online conference appointment) if you fall behind or are confused.

Good Luck!

Again, please do not hesitate to contact me if you are confused, or even just uncertain, about anything. **There are no stupid questions!**

By the way, this is Betty Zing, my (mostly black) basset hound. She's six years old and spoiled rotten. (Actually, she's a very good dog.) She's the course mascot.

Dr. Carol Robinson
clrobins@kent.edu

